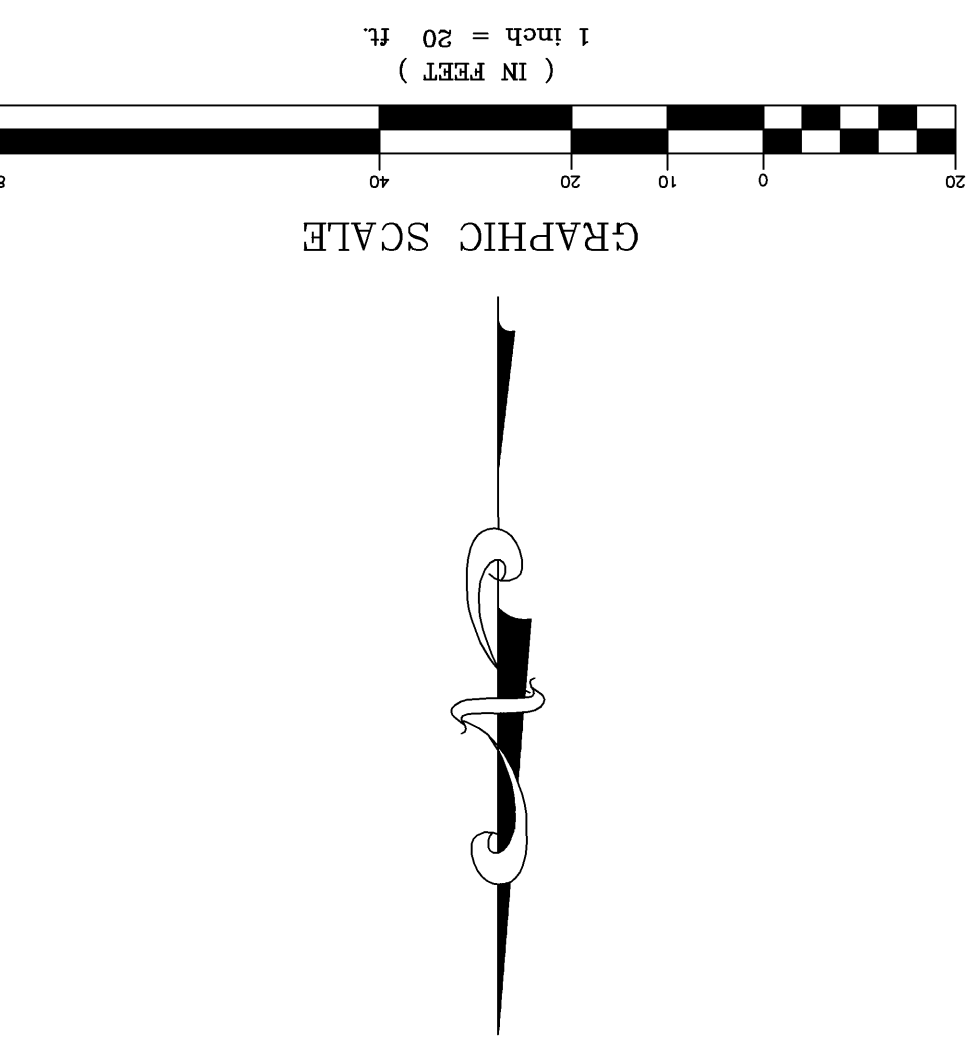
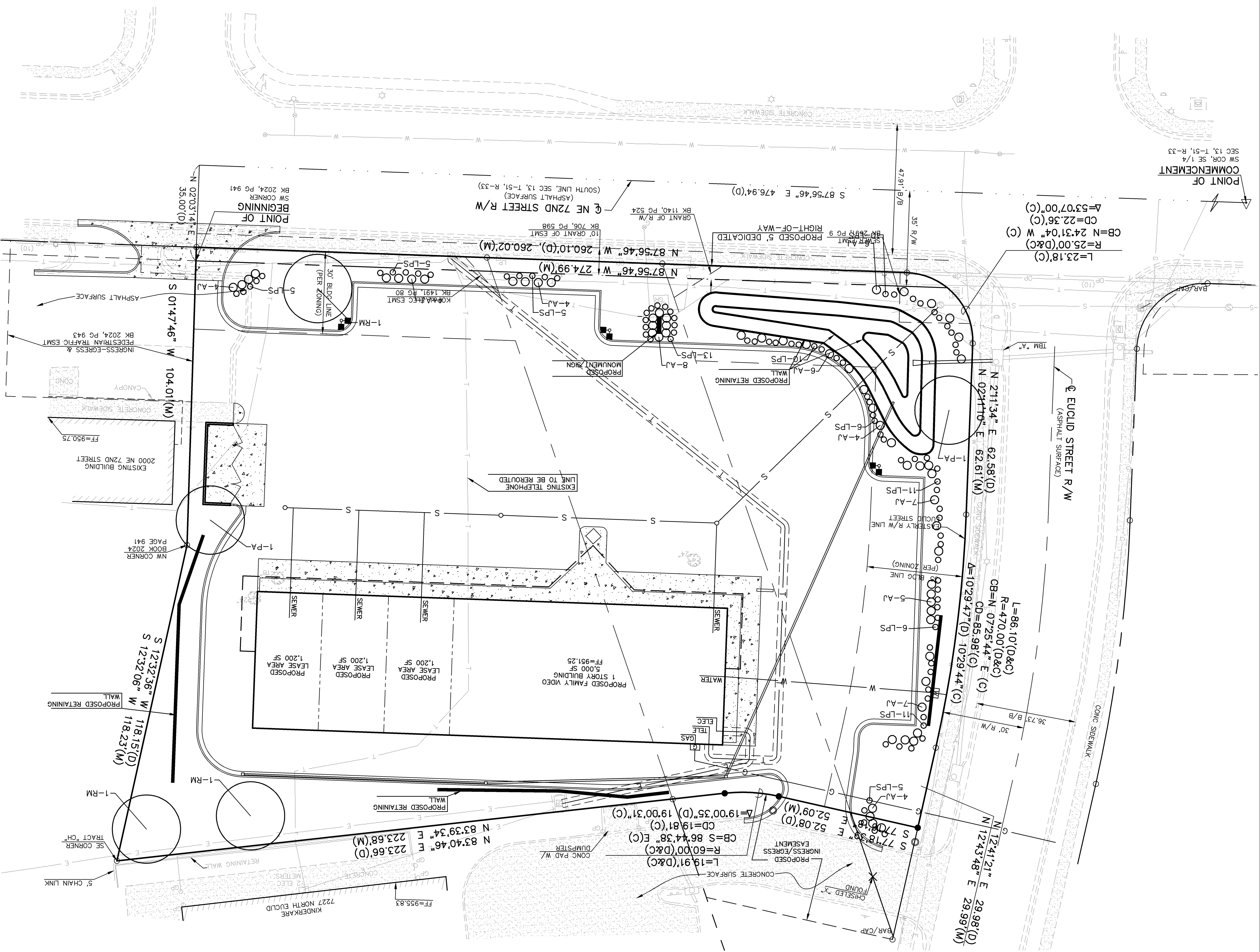


THIS DRAWING SHALL NOT BE UTILIZED BY ANY PERSON, FIRM, OR CORPORATION IN WHOLE OR IN PART WITHOUT THE SPECIFIC PERMISSION OF KAW VALLEY ENGINEERING, INC.

PLANT SCHEDULE					
KEY	QTY.	BOTANICAL NAME	COMMON NAME	SIZE	
<b>SHRUBS</b>					
AJ	56	JUNIFERUS HORIZONTALIS 'PLUMOSA COMPACTA'	ANDORRA JUNIPER	3 GAL.	CONT.
LPS	87	SPIREA JAPONICA	LITTLE PRINCESS SPIREA	3 GAL.	CONT.
<b>TREES</b>					
RM	3	ACRE RUBRUM 'RED SUNSET'	RED SUNSET MAPLE	2 1/2" CAL.	B & B
PA	2	SOPHERA JAPONICA	JAPANESE PAGODATIAC	2 1/2" CAL.	B & B

ALL OPEN SPACE AREAS NOT COVERED BY TREES AND SHRUBS SHALL BE SEEDED OR SOODED.



**BENCHMARKS:**  
 BM #949: CITY OF GLADSTONE BENCHMARK. CHISELED SQUARE CUT ON NORTH END OF LOWER CONCRETE RETAINING WALL, 50'± WEST OF THE CENTERLINE OF NORTH WOODLAND AVENUE AT NORTH END OF TRIPLE 72ND STREET AND NORTH EUCLID. ELEV=943.79  
 TBM 'A'. CHISELED SQUARE SET IN SOUTHWEST CORNER OF CURB INLET AT NORTHEAST QUADRANT OF NE 72ND STREET AND NORTH EUCLID. ELEV=943.79  
 TBM 'B'. CHISELED SQUARE SET SOUTHWEST CORNER OF CURB INLET IN NORTH SIDE OF DRIVEWAY TO KINDERKARE BUILDING, 100'± EAST OF ENTRANCE TO NORTH EUCLID SOUTHERN ENTRANCE. ELEV=950.92  
 TBM 'C'. CHISELED SQUARE SET IN NORTHWEST CORNER OF WEST END OF SIDEWALK IN FRONT OF BUILDING AT 2000 NE 72ND STREET, 10'± EAST OF SUBJECT PROPERTIES EAST PROPERTY LINE. ELEV=950.92

PROJ. NO.	A07_3614
DATE	OCTOBER 12, 2007
DESIGNER	PMP/LDO
DRAWN BY	BH/RR
CFN	3614SDP
SHEET	2 OF 2

**FAMILY VIDEO**  
 NE 72ND STREET & EUCLID STREET  
 GLADSTONE, MISSOURI

**SITE DEVELOPMENT PLAN**

**KAW VALLEY ENGINEERING, INC. - CONSULTING ENGINEERS**  
 Offices: Junction City, Mo., Kansas City, Mo., Lenexa, Mo., Kansas City, Mo., Lenexa, Mo., Kansas City, Mo., Lenexa, Mo.

2319 NORTH JACKSON  
 P.O. BOX 1304  
 JUNCTION CITY, KANSAS 66441  
 785-762-5040 FAX 785-762-7744  
 E-MAIL jk@kveeng.com  
 WEB SITE www.kveeng.com

REV	DATE	DESCRIPTION	DSN	DWN	CHK
2	11-26-07	REVISED PER CITY COMMENTS			
1	11-26-07	REVISED PER CITY COMMENTS			
0	10-15-07	INITIAL ISSUE			