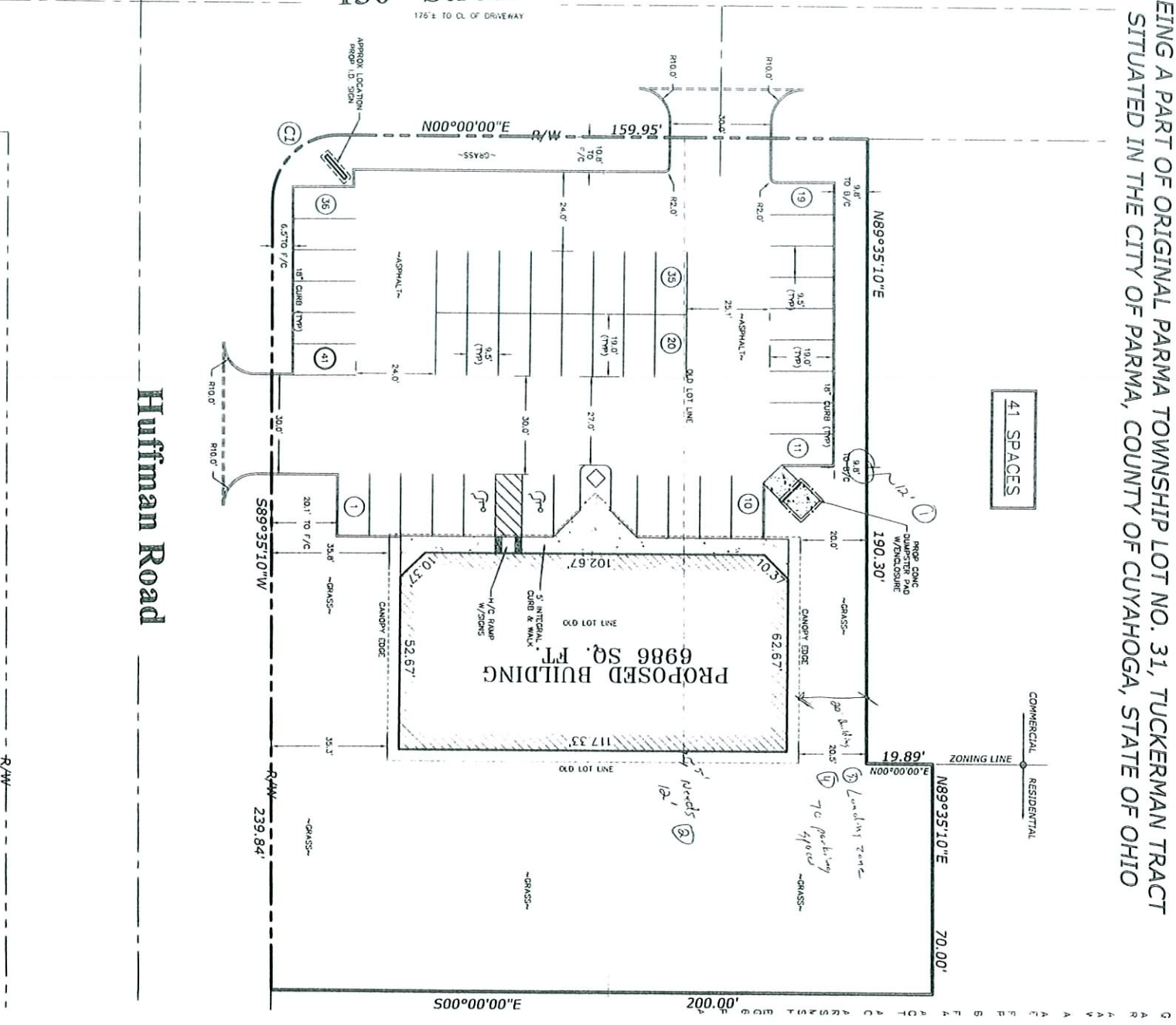


FAMILY VIDEO SITE PLAN PRELIMINARY PLAN

BEING A PART OF ORIGINAL PARMA TOWNSHIP LOT NO. 31, TUCKERMAN TRACT
SITUATED IN THE CITY OF PARMA, COUNTY OF CUYAHOGA, STATE OF OHIO



Huffman Road

130th Street
176' ± TO CL OF DRIVEWAY

41 SPACES

PROPOSED BUILDING
6986 SQ. FT.

ZONING LINE
COMMERCIAL
RESIDENTIAL

LANDING ZONE
70' BUILDING
410' ±

R/W

500.00' ± E
200.00'

239.84'

70.00'

589°35'10"W

N89°35'10"E

N89°35'10"E

N00°00'00"E R/W

(C1)

R10.0'

R10.0'

R10.0'

R10.0'

R/W

239.84'

20.1' TO F/C

6.5' TO F/C

18' CURB (TYP)

24.0'

24.0'

30.0'

30.0'

35.8'

35.3'

30.0'

27.0'

24.0'

19.0'

9.2'

9.5'

9.8'

9.8'

9.8'

9.8'

9.8'

9.8'

9.8'

9.8'

9.8'

9.8'

9.8'

9.8'

9.8'

9.8'

9.8'

9.8'

9.8'

9.8'

9.8'

9.8'

9.8'

9.8'

9.8'

9.8'

9.8'

9.8'

9.8'

9.8'

9.8'

9.8'

9.8'

9.8'

9.8'

9.8'

9.8'

9.8'

9.8'

9.8'

9.8'

9.8'

9.8'

9.8'

9.8'

9.8'

9.8'

9.8'

9.8'

9.8'

9.8'

9.8'

9.8'

9.8'

9.8'

9.8'

9.8'

9.8'

9.8'

9.8'

9.8'

9.8'

9.8'

9.8'

9.8'

9.8'

9.8'

9.8'

9.8'

9.8'

9.8'

9.8'

9.8'

9.8'

9.8'

9.8'

9.8'

9.8'

9.8'

9.8'

9.8'

9.8'

9.8'

9.8'

9.8'

9.8'

9.8'

9.8'

9.8'

9.8'

9.8'

9.8'

9.8'

9.8'

9.8'

9.8'

9.8'

9.8'

9.8'

9.8'

9.8'

9.8'

9.8'

9.8'

9.8'

9.8'

9.8'

9.8'

9.8'

9.8'

9.8'

9.8'

9.8'

9.8'

9.8'

9.8'

9.8'

9.8'

9.8'

9.8'

9.8'

9.8'

9.8'

9.8'

9.8'

9.8'

9.8'

9.8'

9.8'

9.8'

9.8'

9.8'

9.8'

9.8'

9.8'

9.8'

9.8'

9.8'

9.8'

9.8'

9.8'

9.8'

9.8'

9.8'

9.8'

9.8'

9.8'

9.8'

9.8'

9.8'

9.8'

9.8'

9.8'

9.8'

9.8'

9.8'

9.8'

9.8'

9.8'

9.8'

9.8'

9.8'

9.8'

9.8'

9.8'

9.8'

9.8'

9.8'

9.8'

9.8'

9.8'

9.8'

9.8'

9.8'

9.8'

9.8'

9.8'

9.8'

9.8'

9.8'

9.8'

9.8'