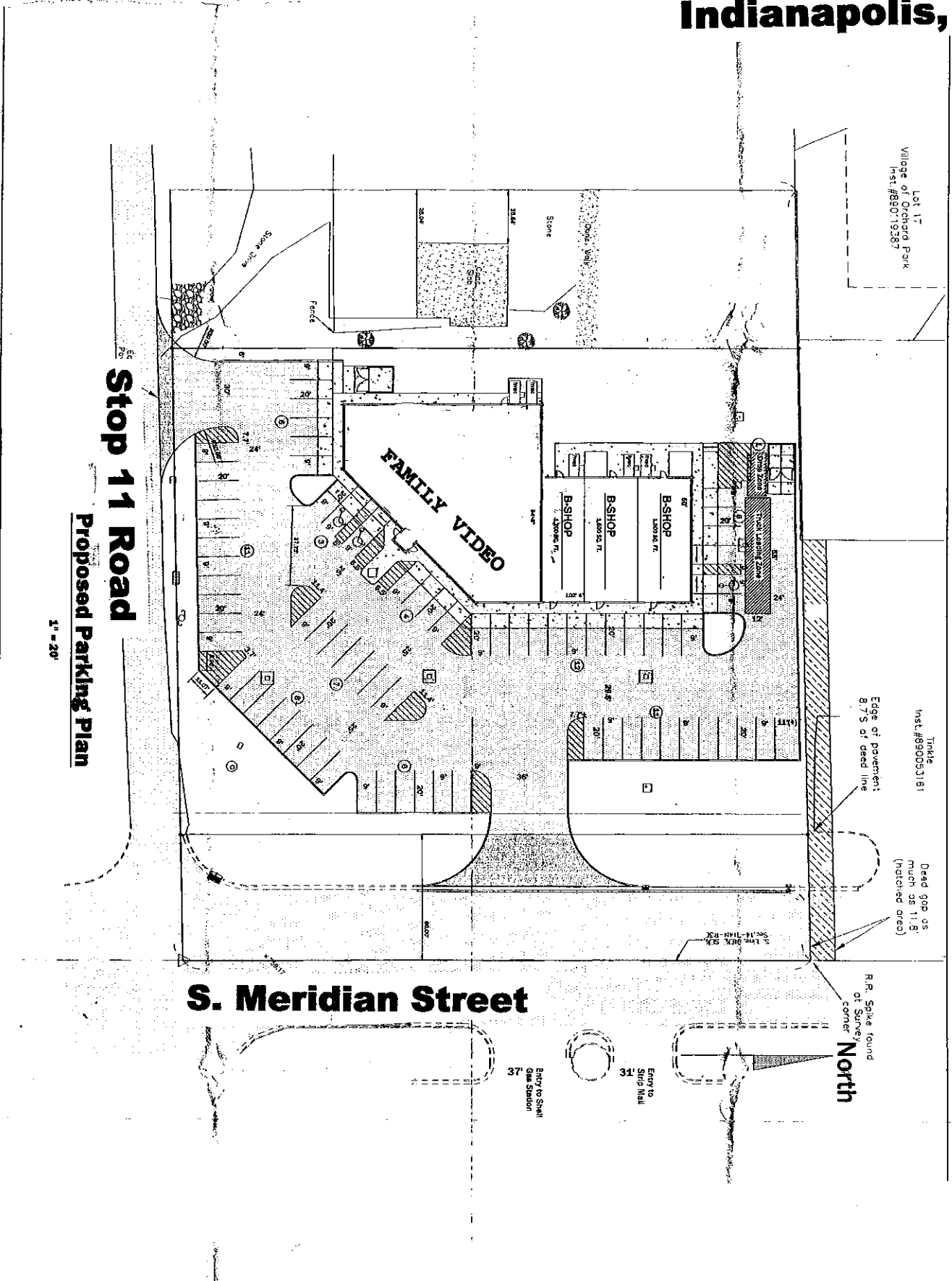


#374

Indianapolis, IN



Lot 17  
Village of Orchard Park  
Inst #890719387

Tinkle  
Inst #890053181

Edge of pavement  
8.75' of deed line

Dead gap ss  
much as 11.8'  
(hatched area)

R.R. Spike found  
at Survey  
corner  
**North**

**Stop 11 Road**

**Proposed Parking Plan**

1" = 20'

**S. Meridian Street**

Far.  
7750 South Meridian Street  
Indianapolis, IN 46217

**Engineer Associates**  
9902 York Court  
Indianapolis, IN 46240  
TELEPHONE 312-625333  
FAX 312-625330  
WWW.EngineerAssociates.com  
Member: International Association of Professional Engineers, Inc.

Checked: JCL  
Drawing Date: 9/27/04  
Revision Date:  
2/22/05 (Revisions per CDMS)  
4/29/04 (ASB/SL/CS/MS/SH/ML)  
City of Indianapolis

**Dates**  
Print Information:  
File Name: 111111.dwg  
Plot Date: 03-85  
CAG Operator: JCL

Sheet number  
**C4**

Seal  
Professional Engineer  
No. 20887  
State of Indiana  
Exp. 03-31-05