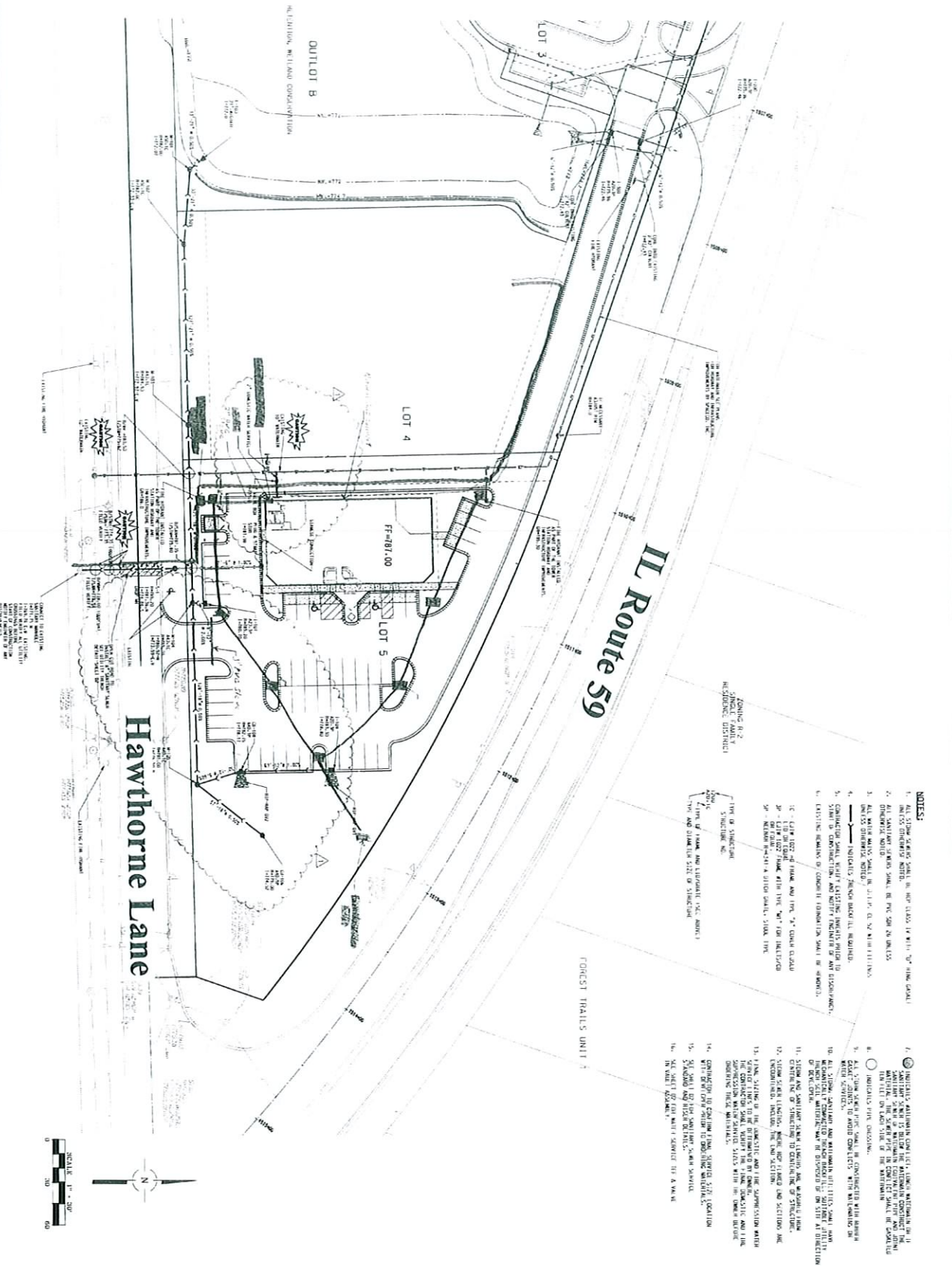
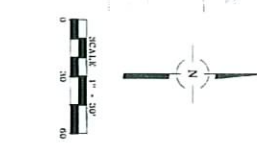


# West Chicago, IL #344



- NOTES:**
1. ALL SHOWN STRUCTURES SHALL BE 100% CLASSIFIED BY THE CITY OF WEST CHICAGO.
  2. FOUNDATION SHALL BE 12" MINIMUM CONCRETE ON 4" MINIMUM SAND FILL.
  3. ALL WATER MAINS SHALL BE 12" MINIMUM DIAMETER UNLESS OTHERWISE NOTED.
  4. INDICATES STRUCTURE SHALL BE REQUIRED.
  5. CONDUCTOR SHALL VERIFY EXISTING UTILITIES PRIOR TO START OF CONSTRUCTION AND NOTIFY NEIGHBOR OF ANY DISRUPTIONS.
  6. EXISTING REMAINS OF CONCRETE FOUNDATION SHALL BE REPAIRED.
  7. 12" - 18" DEEP OF GRADE AND 18" - 24" CONCRETE SLAB SHALL BE 12" DEEP FROM THE 18" MINIMUM CONCRETE SLAB.
  8. 24" - 36" DEEP FROM THE 18" MINIMUM CONCRETE SLAB SHALL BE 24" DEEP.
  9. 36" - 48" DEEP FROM THE 18" MINIMUM CONCRETE SLAB SHALL BE 36" DEEP.
  10. 48" - 60" DEEP FROM THE 18" MINIMUM CONCRETE SLAB SHALL BE 48" DEEP.
  11. 60" - 72" DEEP FROM THE 18" MINIMUM CONCRETE SLAB SHALL BE 60" DEEP.
  12. 72" - 84" DEEP FROM THE 18" MINIMUM CONCRETE SLAB SHALL BE 72" DEEP.
  13. 84" - 96" DEEP FROM THE 18" MINIMUM CONCRETE SLAB SHALL BE 84" DEEP.
  14. 96" - 108" DEEP FROM THE 18" MINIMUM CONCRETE SLAB SHALL BE 96" DEEP.
  15. 108" - 120" DEEP FROM THE 18" MINIMUM CONCRETE SLAB SHALL BE 108" DEEP.
  16. 120" - 132" DEEP FROM THE 18" MINIMUM CONCRETE SLAB SHALL BE 120" DEEP.
  17. 132" - 144" DEEP FROM THE 18" MINIMUM CONCRETE SLAB SHALL BE 132" DEEP.
  18. 144" - 156" DEEP FROM THE 18" MINIMUM CONCRETE SLAB SHALL BE 144" DEEP.
  19. 156" - 168" DEEP FROM THE 18" MINIMUM CONCRETE SLAB SHALL BE 156" DEEP.
  20. 168" - 180" DEEP FROM THE 18" MINIMUM CONCRETE SLAB SHALL BE 180" DEEP.
  21. 180" - 192" DEEP FROM THE 18" MINIMUM CONCRETE SLAB SHALL BE 192" DEEP.
  22. 192" - 204" DEEP FROM THE 18" MINIMUM CONCRETE SLAB SHALL BE 204" DEEP.
  23. 204" - 216" DEEP FROM THE 18" MINIMUM CONCRETE SLAB SHALL BE 216" DEEP.
  24. 216" - 228" DEEP FROM THE 18" MINIMUM CONCRETE SLAB SHALL BE 228" DEEP.
  25. 228" - 240" DEEP FROM THE 18" MINIMUM CONCRETE SLAB SHALL BE 240" DEEP.
  26. 240" - 252" DEEP FROM THE 18" MINIMUM CONCRETE SLAB SHALL BE 252" DEEP.
  27. 252" - 264" DEEP FROM THE 18" MINIMUM CONCRETE SLAB SHALL BE 264" DEEP.
  28. 264" - 276" DEEP FROM THE 18" MINIMUM CONCRETE SLAB SHALL BE 276" DEEP.
  29. 276" - 288" DEEP FROM THE 18" MINIMUM CONCRETE SLAB SHALL BE 288" DEEP.
  30. 288" - 300" DEEP FROM THE 18" MINIMUM CONCRETE SLAB SHALL BE 300" DEEP.



**CONSULTING ENGINEERS  
SITE DEVELOPMENT ENGINEERS  
LAND SURVEYORS**

**SP**

1575 N. Higgins Road, Suite 200  
Rosemont, IL 60018  
Phone: (847) 614-4060 Fax: (847) 614-4065

**SP**

1575 N. Higgins Road, Suite 200  
Rosemont, IL 60018  
Phone: (847) 614-4060 Fax: (847) 614-4065

**UTILITY PLAN**

**FAMILY VIDEO**

**WEST CHICAGO, ILLINOIS**

NO.	DATE	REMARKS
1	02/13/24	REV. CITY
NO.	DATE	REMARKS