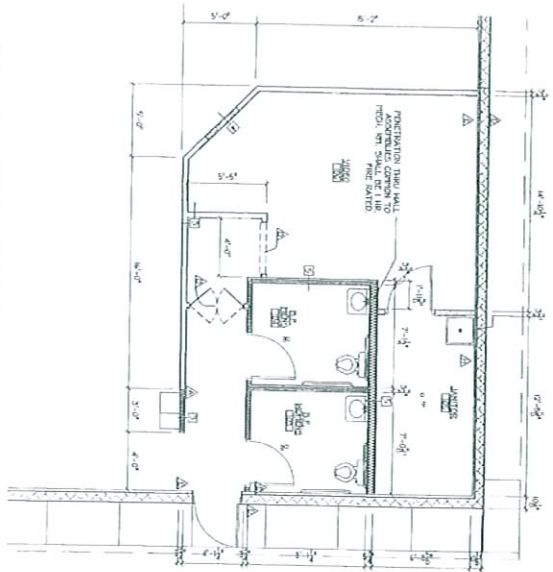
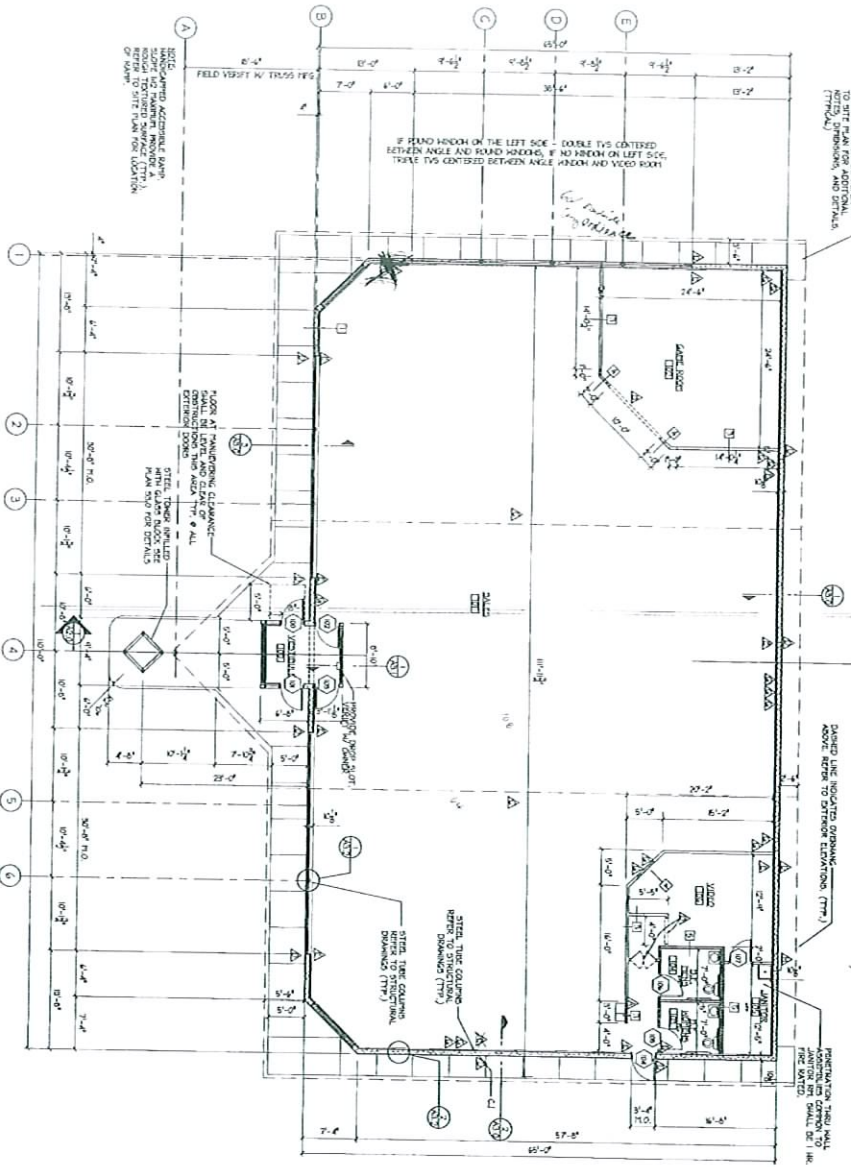


# 287 Berkeley MI.



JANITOR & TOILET ROOMS  
SCALE: 1/4" = 1'-0"

**NOTES**  
SEE FLOOR PLAN KEY NOTES BELOW  
PROVIDE DRYWALL CONTROL JOINTS AT SAME POINTS AS EXTERIOR MASONRY CONTROL JOINTS  
FIELD VERIFY



FLOOR PLAN  
SCALE: 1/8" = 1'-0"

**FLOOR PLAN KEY NOTES**

- ▲ FINISH REBUILT OVER EXISTING & RECORDED FOR SHOWN, WITH VARIATION & REVISIONS.
- ▲ ORIGINAL LAYOUT AT 8'-0" A.F.F.
- ▲ SHIFTS/FORMS ARE INDICATED WITH 3/8" DIA. PT. MARKS. SEE THE "V" SYMBOLS ON THE PLAN FOR THE LOCATION OF THE FORMS. THE FORMS ARE TO BE REMOVED AFTER THE CONSTRUCTION OF THE WALLS. THE FORMS ARE TO BE REUSED FOR THE CONSTRUCTION OF THE OTHER WALLS.
- ▲ FINISH REBUILT OVER EXISTING & RECORDED FOR SHOWN, WITH VARIATION & REVISIONS.
- ▲ ORIGINAL LAYOUT AT 8'-0" A.F.F.
- ▲ SHIFTS/FORMS ARE INDICATED WITH 3/8" DIA. PT. MARKS. SEE THE "V" SYMBOLS ON THE PLAN FOR THE LOCATION OF THE FORMS. THE FORMS ARE TO BE REMOVED AFTER THE CONSTRUCTION OF THE WALLS. THE FORMS ARE TO BE REUSED FOR THE CONSTRUCTION OF THE OTHER WALLS.

**CODE REVIEW SUMMARY**

- USE CODES: INTERNATIONAL, IBC
- TYPE OF CONSTRUCTION: TYPE II-B, UNREINFORCED
- EXTERIOR WALL FINISH: 2" MIN. GYPSUM BOARD OVER 1/2" MIN. INSULATION
- INTERIOR WALL FINISH: 5/8" MIN. GYPSUM BOARD OVER 1/2" MIN. INSULATION
- CEILING FINISH: 5/8" MIN. GYPSUM BOARD OVER 1/2" MIN. INSULATION
- FLOOR FINISH: 1" MIN. GYPSUM BOARD OVER 1/2" MIN. INSULATION

**WALL TYPES**

- 1. 8" MIN. CMU WITH STOPS AT 2' O.C. MAX. W/ 1/2" MIN. GYPSUM BOARD OVER 1/2" MIN. INSULATION
- 2. 8" MIN. CMU WITH STOPS AT 2' O.C. MAX. W/ 1/2" MIN. GYPSUM BOARD OVER 1/2" MIN. INSULATION
- 3. 8" MIN. CMU WITH STOPS AT 2' O.C. MAX. W/ 1/2" MIN. GYPSUM BOARD OVER 1/2" MIN. INSULATION
- 4. 8" MIN. CMU WITH STOPS AT 2' O.C. MAX. W/ 1/2" MIN. GYPSUM BOARD OVER 1/2" MIN. INSULATION
- 5. 8" MIN. CMU WITH STOPS AT 2' O.C. MAX. W/ 1/2" MIN. GYPSUM BOARD OVER 1/2" MIN. INSULATION
- 6. 8" MIN. CMU WITH STOPS AT 2' O.C. MAX. W/ 1/2" MIN. GYPSUM BOARD OVER 1/2" MIN. INSULATION

**familyVideo**  
BERKLEY, MICHIGAN  
FLOOR PLAN

**Rockford Construction Company, Inc.**  
General Contractors/Construction Managers

**DTS**  
DTS ENGINEERING & ARCHITECTURE  
10000 GRAND AVENUE  
ANN ARBOR, MI 48106  
TEL: (313) 963-4400  
FAX: (313) 963-4401  
WWW.DTSENGR.COM

**DATE:** 07/20/03  
**PROJECT:** SITE PLAN SET  
**DRAWN BY:** JTB  
**CHECKED BY:** JTB  
**SCALE:** AS SHOWN

**Sheet No. A1.0**