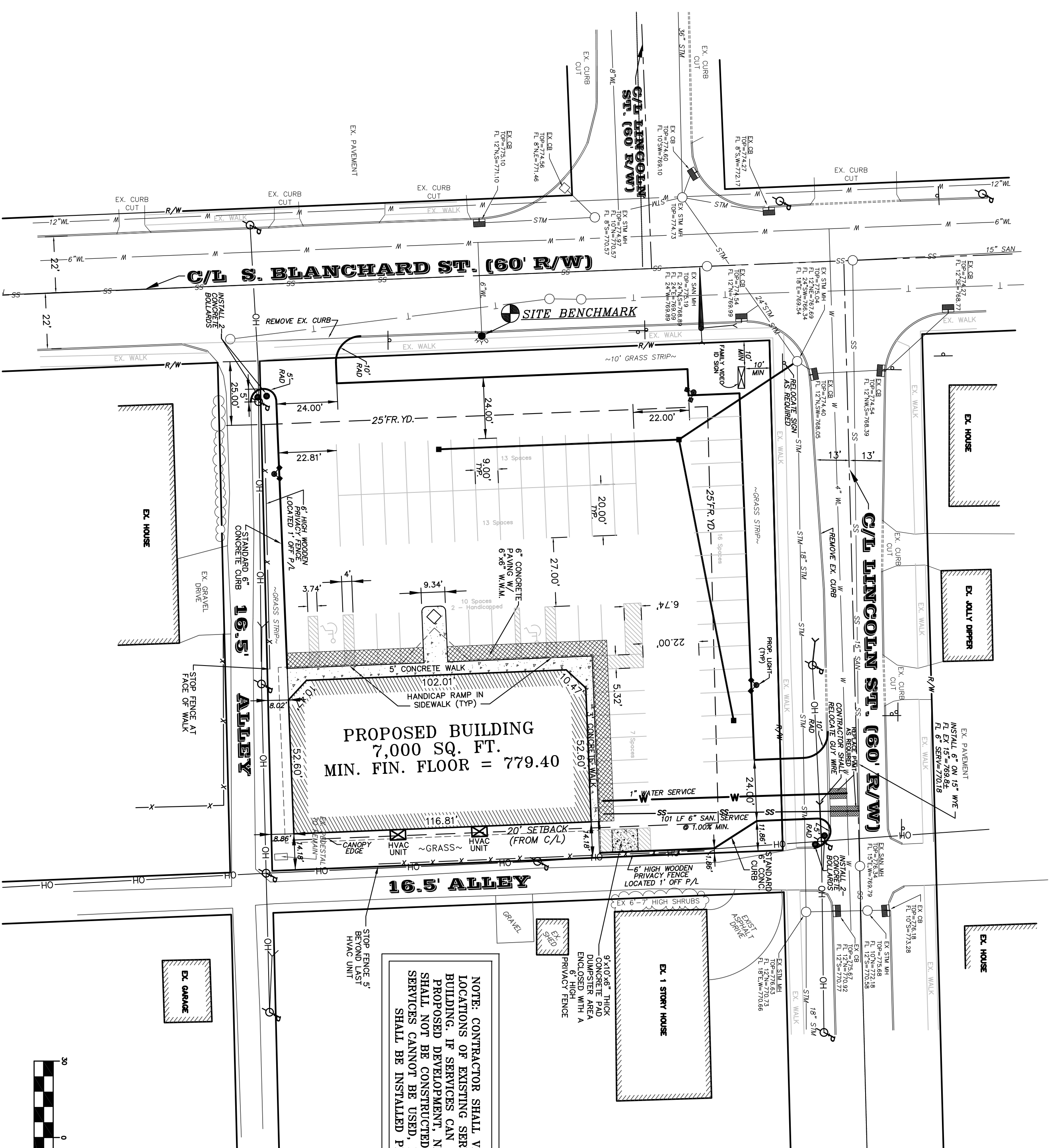


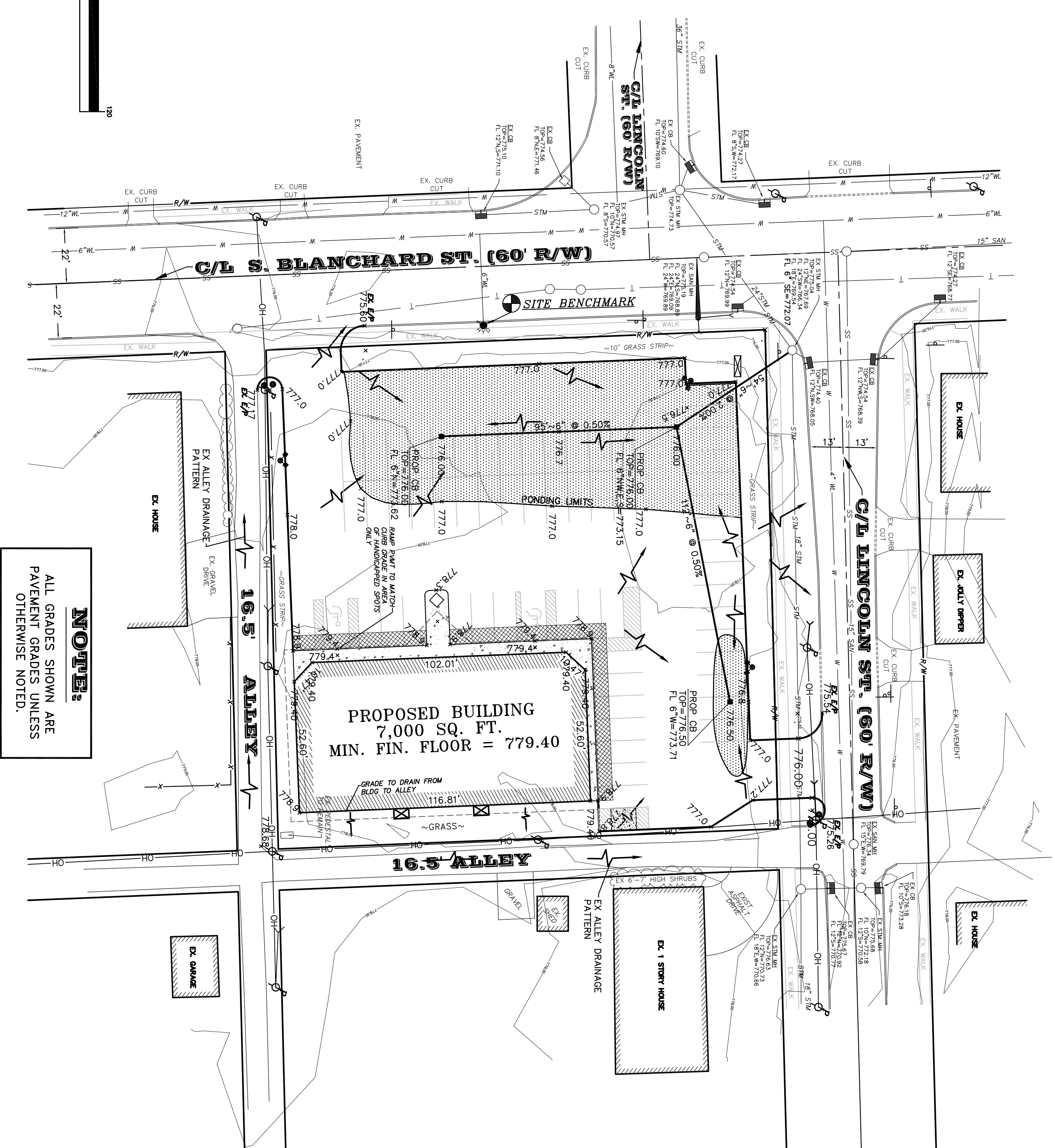
FAMILY VIDEO STORE PLAN PROPOSED CONDITIONS

LOTS 408,409,410,411 IN THE EAST FINDLAY ADDITION
CITY OF FINDLAY, HANCOCK COUNTY, STATE OF OHIO.

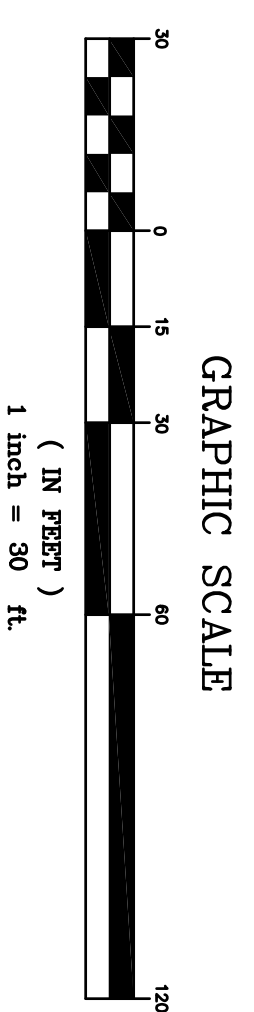
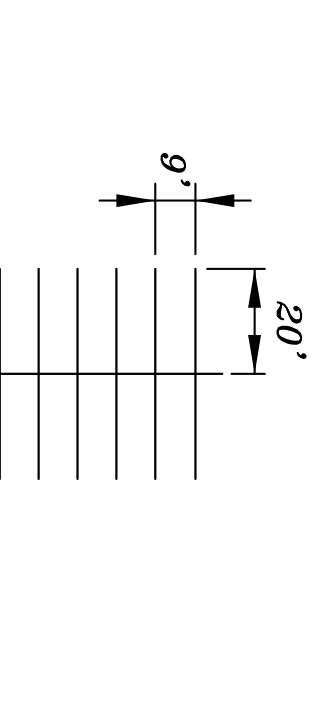
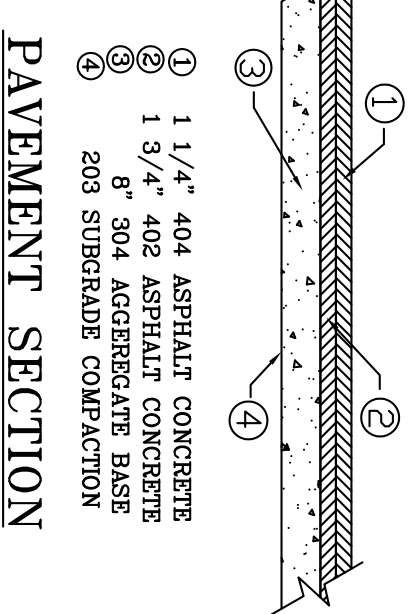
SITE DIMENSION PLAN



SITE GRADING PLAN



Ohio Utilities Protection Service
2 WORKING DAYS BEFORE YOU DIG
Call Toll Free 800-362-2764
Non-Members Must Be Called Directly



LEGEND

⊕ MONUMENT BOX	~ SURFACE DRAINAGE PATTERN
⊙ DRILLED HOLE	○ MANHOLE
⊙ RR SPIKE	○ CATCH BASIN
⊙ RR NAIL	○ HYDRANT
⊙ REBAR	○ CONCRETE
⊙ POWER POLE W/ GUY	○ CURB INLET
⊙ LIGHT POLE	
⊙ BOLLARD	

NOTE:
ALL GRADES SHOWN ARE PAVEMENT GRADES UNLESS OTHERWISE NOTED.

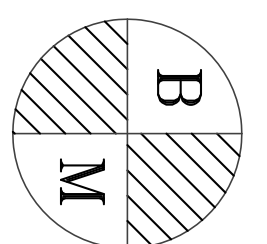
FAMILY VIDEO
FINDLAY, OHIO

REVISIONS MADE BY CITY OF FINDLAY

NO.	DATE	BY	DESCRIPTION
1	5/18/00	WJS	ISSUE FOR PERMIT
2	7/1/00	WJS	REVISED PER CITY OF FINDLAY

PREPARED BY: VAN HORN, HOOVER & ASSOCIATES, INC.
SUPERVISING & ENGINEERING: P.O. BOX 612, FINDLAY, OHIO 45830
(419) 423-6830

DATE: 7/1/00
SHEET 2 OF 2



SITE BENCHMARK:
NW BONNET BOLT ON HYDRANT LOCATED ALONG THE WEST SIDE OF THE SUBJECT PROPERTY.
ELEVATION = 778.64

